



# VITEK<sup>®</sup> MS PRIME

SUPERIOR WORKFLOW. PRIME RESULTS.



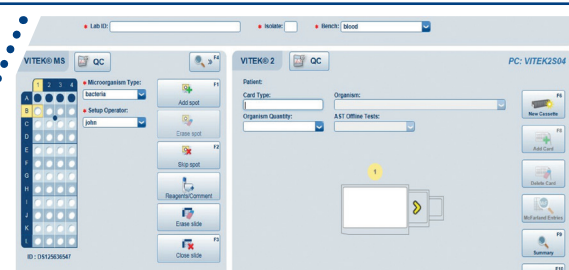
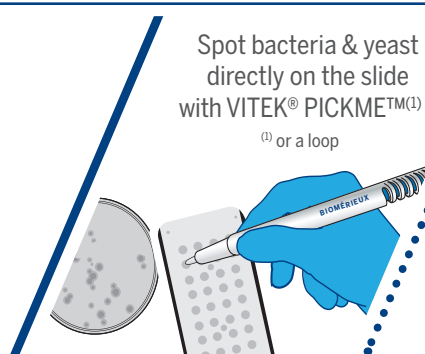
PIONEERING DIAGNOSTICS

# TAKE YOUR MASS SPECTROMETRY TO THE NEXT LEVEL

Built on a solid foundation of microbiology expertise, VITEK® MS PRIME is a true evolution of the revolutionary **MALDI-TOF** (Matrix Assisted Laser Desorption Ionization-Time of Flight) technology for microbial identification to deliver productivity and accuracy through efficient routine workflow.

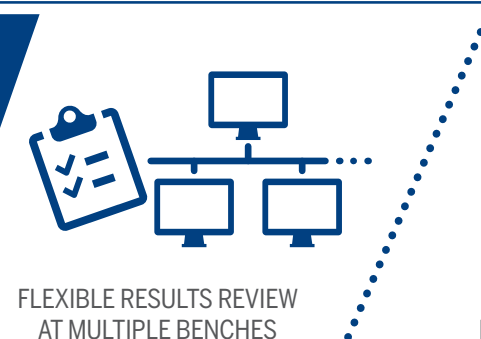
## ULTRA-EFFICIENT ROUTINE WORKFLOW

Optimize your daily processes and save time



## INTEGRATED ID

Deliver faster results for impactful decision making



### OPTIMIZED WORKFLOW EFFICIENCY

- Fast, easy protocols for bacteria and fungi sample preparation.
- Automated continuous Load & Go.
- Urgent slide prioritization for critical samples.

### ROBUST AND EVOLVING DATABASE

- >1300 bacteria and fungi species and groups including frequently occurring industrial organisms.
- More than 15,000 total strains used.
- Geographical strains, internal strains, customer strains and culture collections (ATCC).

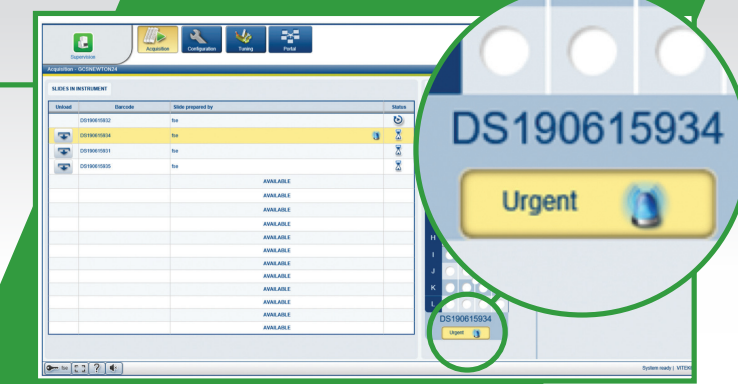
### FULLY CONNECTED AND INTEGRATED ID SOLUTION

- Sample prep and results review from anywhere on the network.
- Seamless connectivity to your LIMS.
- 21 CFR Part 11 compliance.
- Full reagents traceability.

### COMMITTED PARTNER

- By your side with a full suite of services.
- More than 55 years of experience in microbiology.

### URGENT SLIDE PRIORITIZATION



**INNOVATIVE FEATURES, PRIME BENEFITS**  
 Greater efficiency built on the foundation you know and trust for fast ID

### INCREASED PRODUCTIVITY, FASTER TIME TO RESULT

#### Automated, continuous load & go:

- Load up to 16 slides.
- End-to-end sample traceability with automatic barcode scanning.
- On-demand individual or batch slide unloading.

#### Urgent slide prioritization:

- Prioritize critical samples in one click.

### MAXIMIZE SYSTEM UPTIME AND RELIABILITY

#### Automated fine-tuning:

- Initiate automated fine-tuning when the instrument is not in use.
- Redirect technician time to value-add activities.

#### All-new inside:

- Lifetime laser, innovative ion optics and new linear detector.

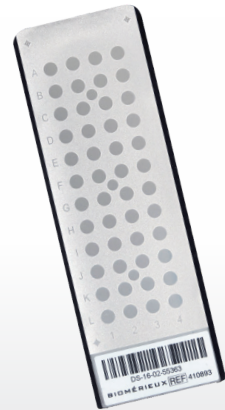
### ADAPTED TO THE LAB ENVIRONMENT

#### Benchtop system

- Easy integration into your lab.

# VITEK® MS PRIME REAGENTS

## PRODUCT LIST\*



**VITEK® MS-DS  
TARGET SLIDES**  
REF 410893

Disposable target slides with a unique barcode identifier for preparation of 48 samples.

TRACEABILITY  
& PEACE  
OF MIND



**VITEK® MS-CHCA  
MATRIX**  
REF 411071

- ✓ Ready-to-use Matrix application to spot.
- ✓ Ready-to-use Formic Acid with no dilution required.
- ✓ Convenient sample preparation with no or minimal extraction.



**VITEK® MS-FA  
FORMIC ACID**  
REF 411072



**VITEK® PICKME™**  
REF 423546 - REF 423551

Innovative sample preparation tool to pick and smear colonies on VITEK® MS target slides.

TIME SAVINGS,  
STANDARDIZATION  
& EASE OF USE



**VITEK® MS MOULD  
REAGENT KIT**  
REF 415680

All inclusive and convenient Mould and Mycobacterium and Nocardia kits increase standardization and accuracy.

SIMPLE, RAPID  
& ACCURATE



**VITEK® MS MYCOBACTERIUM/  
NOCARDIA REAGENT KIT**  
REF 415659 - REF 421564 - REF 4704630

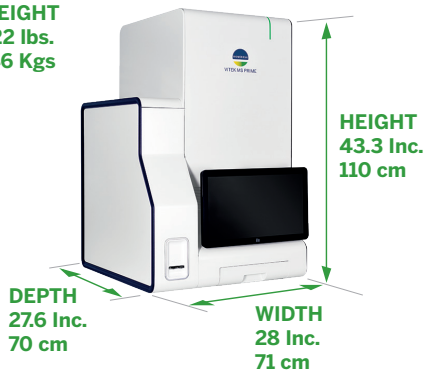
All inclusive kit containing reagents and consumables needed to perform protein inactivation and extraction for identification of Mycobacterium and Nocardia from solid and liquid sample.

- ✓ A supplemental kit is available to process liquid samples.
- ✓ Validated & reproducible protocol.
- ✓ Inactivation process allows specimen handling outside of biosafety level 3.

# BIOMERIEUX, YOUR PARTNER TO MAXIMIZE YOUR EFFICIENCY

## INSTRUMENT SPECIFICATIONS

**WEIGHT**  
322 lbs.  
146 Kgs



## SERVICES

**Leverage reliable and efficient validation protocols for rapid implementation**

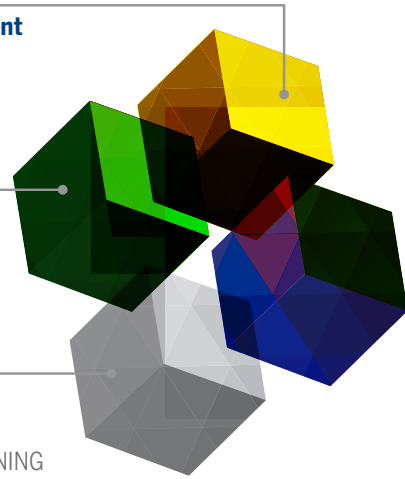
VALIDATION SERVICES

**Maximize your instrument uptime**

INSTRUMENT SERVICE CONTRACTS

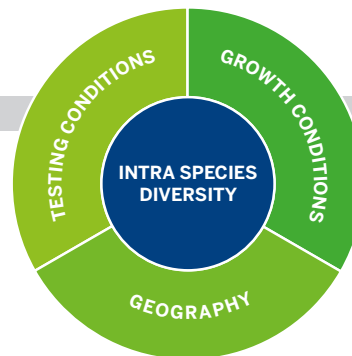
**Streamline your lab activities**

DEDICATED SUPPORT & TRAINING



## ROBUST DATABASE

The VITEK® MS knowledge base incorporates factors which can contribute to intraspecies diversity-testing conditions, growth conditions, and geography.



## VILINK®, THE SMART REMOTE SUPPORT SOLUTION TO ENSURE THE CONTINUITY OF YOUR OPERATIONS

- ✓ **On-line assistance:** rapid diagnosis and solution for minimal lab disruption.
- ✓ **Convenient on-line coaching** on system usage and configuration.\*
- ✓ **Proactive maintenance** for optimal instrument performance.\*\*
- ✓ **On-demand or automatic software/firmware updates** for convenience, maximum performance and workflow efficiency.

\* Technical remote support availability depends on subscribed level contract and system type.  
\*\* Consult your local representative for availability.

