

BIOMÉRIEUX

# IDEA™ STEC

ImmunoDetection Evolution Agar

**Simplify Confirmation, Enhance  
Decision Making, & Protect Your Brand**



**Your Trusted Partner in Augmented Diagnostics**

**PIONEERING DIAGNOSTICS**



# CULTURE MEDIA EVOLUTION

A New Era for the Detection of *Shiga Toxin-Producing E. coli* (stx)

## SIMPLIFY THE CONFIRMATION STEP, ENHANCE DECISION MAKING, & PROTECT YOUR BRAND

IDEA™ STEC is a patented and innovative culture media solution designed to simplify and enhance the confirmation step in detecting *Escherichia coli* producing *Shigatoxin* (stx+), a major health issue.

IDEA™ STEC boosts accuracy and ensures compliance with a next-generation isolation agar leveraging *Shigatoxin* immunocapture — enabling faster, clearer decisions for EHEC confirmation. This advanced agar enables selective isolation of STEC EHEC TOP 7, ensuring high specificity and efficiency.

### EARLY & ACCURATE DETECTION OF PRESUMPTIVE COLONIES

- Clear visual identification of presumptive *Shiga toxin-producing E. coli*
- Presence of a **discolored or grey halo** on typical colonies with different phenotypes

### OPTIMIZED ISOLATION OF STEC STRAINS

- Selective growth of *Shiga toxin-producing* (stx) *E. coli*
- Specificity for typical EHEC strains
- **High performance** for detecting STEC (stx+, eae+) belonging at least in **TOP 7 serogroups**

### EFFICIENCY & ACCURACY GAINS

Streamlined Workflow	Cost Effectiveness	High Confirmation Rate
<ul style="list-style-type: none"><li>• Fewer steps = time saved</li><li>• Fast identification = <b>better diagnostic decisions</b></li></ul>	<ul style="list-style-type: none"><li>• Fewer confirmatory tests</li><li>• Less unnecessary handling</li><li>• Reduced <b>labour time</b></li></ul>	<ul style="list-style-type: none"><li>• Robust performance with IDEA™ STEC</li><li>• Clear visual for further confirmation tests (PCR, latex)</li><li>• Accurate results across STEC, EHEC, &amp; non-STEC strains</li></ul>

Because safety, speed, and accuracy should never be compromised, trust the power of GENE-UP® and IDEA™ STEC to elevate your EHEC/STEC strategy.

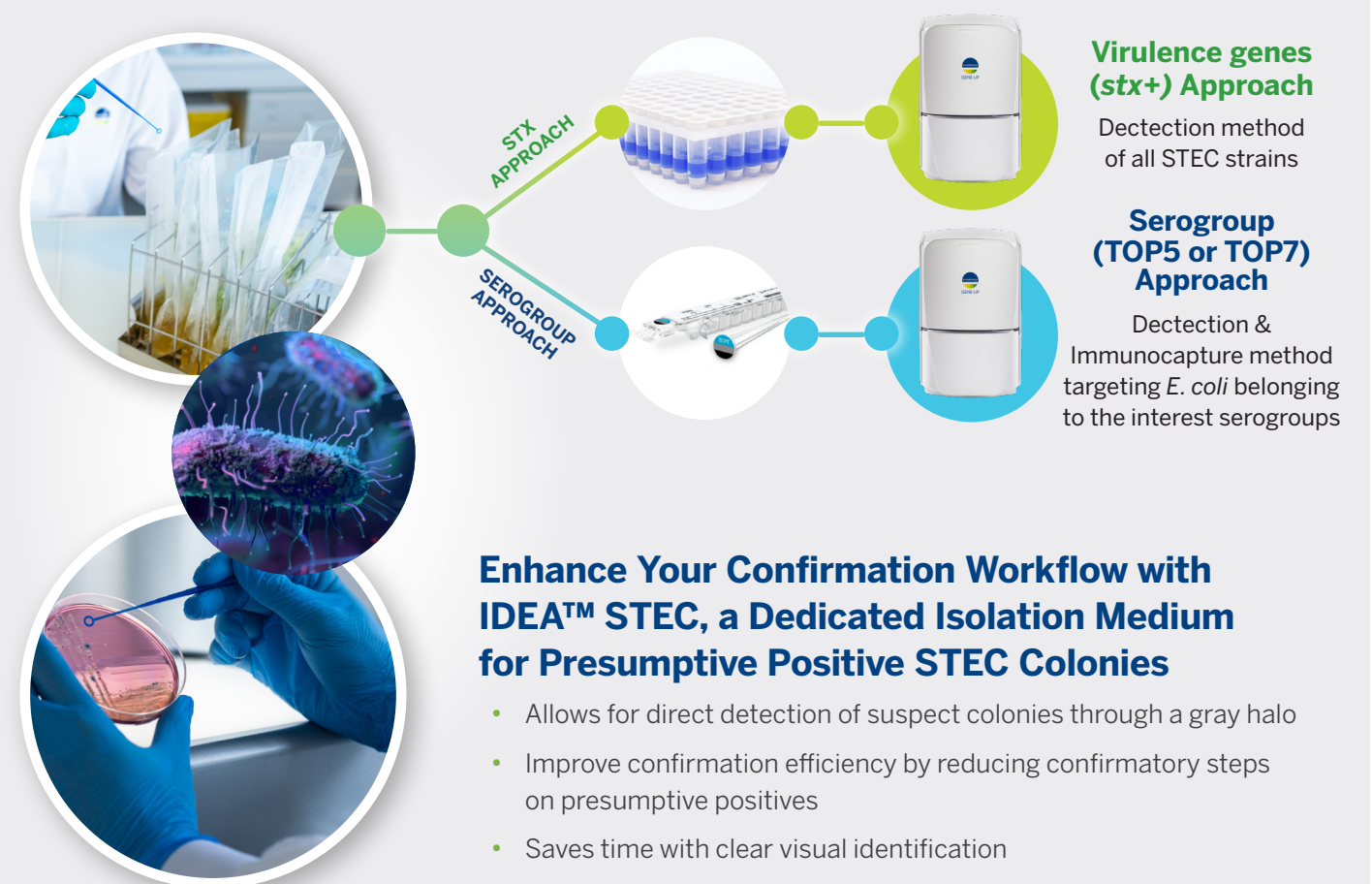
## BIOMÉRIEUX STEC/EHEC DETECTION SOLUTION

Powered By GENE-UP® & IDEA™ STEC

## A POWERFUL AND COMPLETE APPROACH FOR STEC/EHEC DETECTION

bioMérieux's solution combines molecular precision, evolution of culture technology, and efficient workflows to deliver fast and reliable results. Adapt your STEC detection workflow to your specific needs. Multiple options are available to **cover your risk assessment and align with local regulatory requirements**: Detection of STEC (stx+); Detection of typical EHEC (stx+/eae+); Detection of TOP 7 serogroups (O157, O26, O111, O145, O103, O45 and O121) — wherever you operate, bioMérieux has you covered.

### DUAL TARGETING APPROACH (stx+ eae+ TOP 5/7 SEROGROUPS)



### DRIVE RESULTS WITH A SIMPLIFIED CONFIRMATION STEP FOR PERFORMANCE

<b>Confirm up to 50% more positives</b> compared with conventional methods – ensure no critical result is missed	<b>Maximize detection confidence</b> with IDEA™ STEC: rapidly pinpoint true positives with clear, visible colonies	<b>Reduce confirmatory PCR tests by 45–60%</b> , significantly minimizing costs, reagent usage, and technician time

# THE AUGMENTED DIAGNOSTICS APPROACH: FROM TEST RESULTS TO ACTIONABLE INSIGHTS

bioMérieux's Augmented Diagnostics approach combines cutting-edge microbial testing technologies (including **Microbiology** and **Molecular Biology**) with the latest **Genomics** and **Data Science** methodologies, as well as an innovative spirit and **industry experts**.



## MICROBIOLOGY & MOLECULAR



### SAMPLE & MEDIA PREPARATION

- BIOBALL®
- BLUE LINE™
- Culture Media



### SPOILERS & QUALITY INDICATORS

- TEMPO®
- D-COUNT®
- BACT/ALERT®
- GENE-UP®
- VERIFLOW™



### PATHOGEN DETECTION

- VIDAS® KUBE™
- Chromogenic Plates
- GENE-UP®



### MICROBIAL IDENTIFICATION

- VITEK® MS PRIME
- VITEK® COMPACT PRO
- API®



### CUSTOM MOLECULAR BIOLOGY

- The xPRO™ Program

## AUGMENTED-DX PORTAL

DATA INSIGHTS, INVESTIGATIONS, REPORTING



### INVESTIGATION & ROOT CAUSE ANALYSIS

- Pathogen and Spoiler Mapping (*whole genome sequencing, metagenomics*)
- Microbiome Discovery (*metagenomics*)
- GENE-UP® TYPER



### DIGITALIZATION

- ENVIROMAP®
- VILINK®



### PEOPLE & PROCESS UPSKILLING

- EM E-Learning
- Process Optimization
- EM Consulting Services

## GENOMICS & ENVIRONMENTAL MONITORING EXPERTISE



LEARN MORE ABOUT THE AUGMENTED  
DIAGNOSTICS APPROACH ON OUR WEBSITE.