

BIOMÉRIEUX

# Elevate Your Environmental Monitoring Program

Connects the Dots in Your Facility



Your Trusted Partner in Augmented Diagnostics

PIONEERING DIAGNOSTICS



# Gain better control with digitalization

**Monitoring your environment for microbial contamination is critical to food safety, yet can be a challenging task to implement and manage effectively. ENVIROMAP® is a secure, cloud based system that allows you to automate your environmental monitoring program (EMP) and assists with the entire sampling lifecycle.**

## ENVIROMAP® Benefits

### Reliable Execution

- Ensure EMP is executed as intended.
- Standardization across plants and employees.
- Audit readiness.
- Trend & historical analysis.

### Time & Cost savings

- Automated scheduling, Corrective and Preventive Actions, reporting.
- Faster & easier employee training.
- Reduce labor, production down time and water/chemicals usage.

### Faster Time to Action

- Information readily available.
- Detect problems earlier with trending.
- Automated Corrective and Preventive Actions.

## Optimize to your Operations



Flexibility of software allows you to **change and customize** sampling plans as needed.



**Aggregates and synchronizes data** (raw material testing, air, water, finished product).



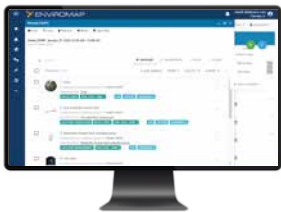
**Connects to different types of data** (equipment, testing, Third Party Lab).



Ease of implementation, **fully supported** and completed in 3-4 weeks with little disruption to operations.

# Streamlined and flexible

## Comprehensive Solution for Data-Driven Decisions



### Smooth scheduling

- Automatically schedules the samples you need when you need them.
- View your schedule in advance as an easy-to-manage list mapped to your plant floor.

### Automated Corrective Actions

- Designate investigative sites, workflow stoppage, and perimeter re-swabbing criteria.
- Automatically schedule corrective action activities.

### Calendar & Task Manager

- Leverage access across your facility and co-manufacturer network in one platform to make decisions.

### Historical Data Analysis & Reporting

- Flexible and easy to use reporting tools to present, analyze, and share results.
- Interactive result maps assist in decision-making for at-risk locations.
- Analyze data beyond Environmental Monitoring (in process, finished product, etc).
- QualMap for more impactful insights.

### Real-time Results Notification

- Schedule, submit, record, and track any sampling procedure, regardless of location.
- Have complete control and visibility over every aspect of your environmental sampling.

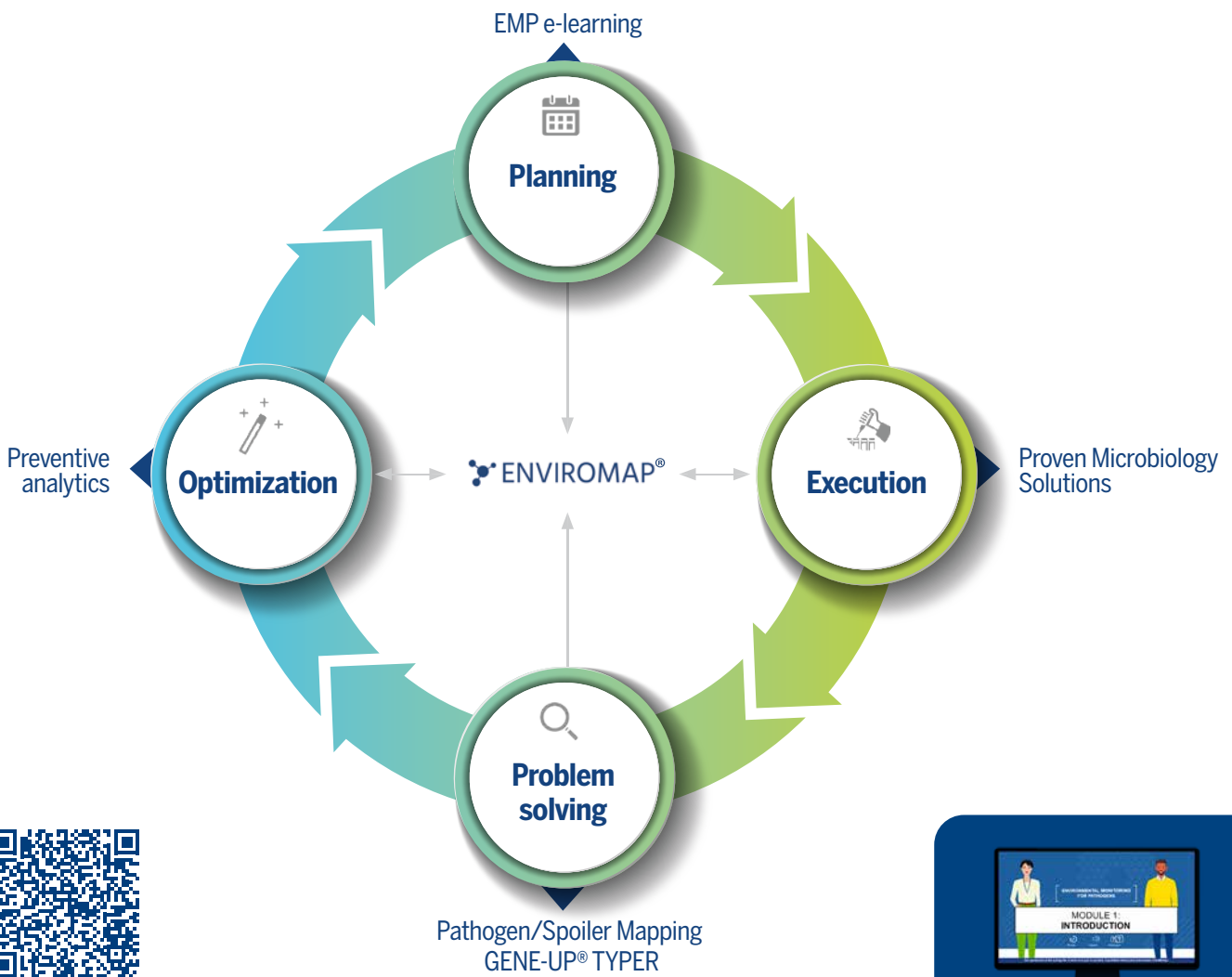
### Sanitation Module Management

- Create sanitation areas, different activities to reflect SOPs.
- Set plan frequencies and assignments.
- Visualize sanitation compliance and effectiveness.



# End-to-end solution for your environmental monitoring program

Our suite of solutions, including ENVIROMAP® software, can empower you to elevate your environmental monitoring process.



Need additional support to **build & implement** your EMP? Try out our **eLearning module!**

bioMérieux's data-driven Environmental Monitoring solutions help you identify potential spoilage or contamination issues in your facility and proactively address challenges.

Elevate your environmental monitoring program with our Augmented Diagnostics Approach.

06-24-9327263 006/GB/A © bioMérieux • This document is not legally binding. bioMérieux reserves the right to modify specifications without notice. BIOMÉRIEUX, the BIOMÉRIEUX logo, are used pending and/or registered trademarks belonging to bioMérieux or one of its subsidiaries or one of its companies. ENVIROMAP is a trademark belonging to Mérieux NutriSciences. • Photos: bioMérieux • bioMérieux • bioMérieux S.A. RCS Lyon 63 620 399 • Printed in France by Masson Communication 438831927 RCS Saint-Malo • BMX.1.149493 Rev1