


# 3P<sup>®</sup> CONNECT

## EM-Body Connectivity



Your Ally in Advancing Quality



bioMérieux's 3P<sup>®</sup> CONNECT streamlines production by using the most efficient tools for your organization.

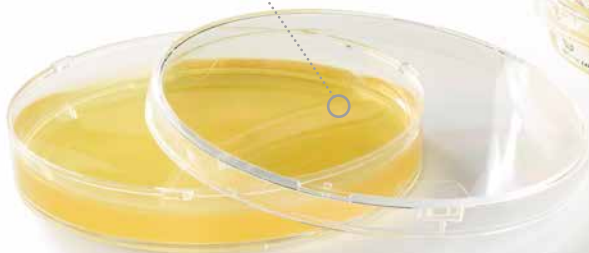
- ▶ Paperless solution
- ▶ Web-based application that adapts to any device
- ▶ Native mobility for use in production areas
- ▶ Unlimited number of users
- ▶ Capable of being integrated with third-party tools (inc. LIMS and IT Infrastructure)

## Maximize your digital experience with 3P<sup>®</sup> SMART PLATES

---

### OPTIMIZED READING

*with clear plate design*



### SAFER HANDLING & TRANSPORT

*with LOCKSURE<sup>®</sup>*



### TRACEABILITY

*with unique GS1 barcode*

# bioMérieux understands your EM workflows.

As a microbiological pioneer and trusted partner for more than 55 years, we realize that the EM processes can be cumbersome by involving multiple departments, abundant low value-added tasks, and the elevated risk of manual errors.

That is why we developed our comprehensive 3P<sup>®</sup> environmental monitoring ecosystem.

3P<sup>®</sup> CONNECT is a future-proof, turnkey software package inspired by and tailored to the EM environment of tomorrow. The combination of start-to-finish traceability and robust data management provides you with the confidence to make reliable decisions on a consistent basis.

## Overcome EM Bottlenecks



Modernize paper-based processes



Lessen time collecting and reconciling samples



Mitigate the risk of accidental errors associated with repetitive manual tasks



Increase real-time data acquisition



Leverage enhanced traceability to collect and manage EM data



Decrease investigations due to manual errors



# Connectivity to ease EM sampling

3P® CONNECT is a dual standalone and LIMS-compatible platform engineered to read EM culture media plates equipped with universal GS1 barcodes ubiquitous to the pharmaceutical industry.

The robust functionality and intuitive interface inherent to 3P CONNECT allows you to execute any EM sampling plan with unparalleled confidence and peace of mind.

3P® CONNECT was designed by and for pharmaceutical EM specialists for seamless integration within your IT environment.



## Maintain Compliance across EM Workflows



Perform EM sampling using a methodical, controlled and documented approach.



Make reliable decisions based on real-time 21 Part 11 CFR compliant data.



Monitor critical production areas with accuracy and precision.

## Enjoy greater Peace of Mind

- Acclimate quickly thanks to seamless implementation and validation
- Customize 3P CONNECT based on individual needs
- Employ robust project management to govern EM workflows

## Harness Novel operational Efficiencies



Shorten time to results during EM workflows by consolidating non-value-added steps.



Save time ordinarily consumed by deviations and investigations.



Resolve discrepancies quickly using complete traceability and barcoded plates.



# Features and benefits of 3P<sup>®</sup> CONNECT

## Experience flexibility

- Arrange sampling plans
- Store maps of critical areas
- Schedule and assign tours
- Manage users and groups



## Streamline Environmental Monitoring (EM) Workflows

### Maximize ease of use

- Scan plate barcodes and sampling locations
- Seamlessly connect to mobile devices

### Limit accidental mistakes

- Ensure expiration dates, plate types, and settle plate exposure times
- Secure incubation duration
- Rely on alerts and alarms along the process during EM sampling

### Take advantage of end-to-end traceability

- Full supervision of samples know where EM samples are at all times
- Record duplicate plate readings if desired



## Data Analysis

- Traceability analysis
- Audit trails for 21 Part 11 CFR compliance
- Alarm reports
- Production and laboratory views for sample supervision

A photograph of a computer monitor displaying a data table. The table has multiple columns and rows of data, with some cells highlighted in blue. The interface includes a search bar and other navigation elements. The monitor is on a stand.



## Minimal Learning Curve

### Avoid hassles with installation and validation

Expedite the implementation of your investment by reducing installation and validation time with:

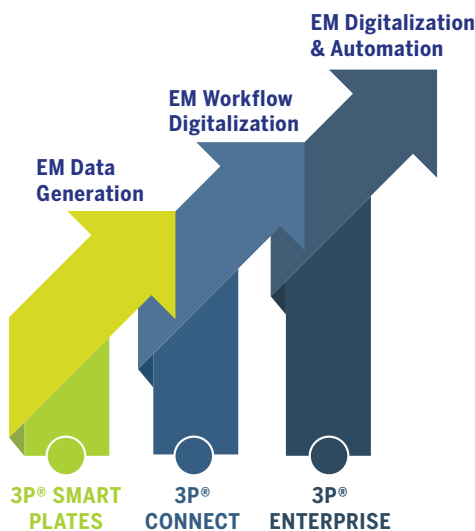
- A thorough implementation management package (installation, configuration, commissioning, training, project management)
- Comprehensive validation documentation (URS, RA, and VMP)
- IQ/OQ, and PQ documentation readily accessible

### Around-the-clock support

Maximize 3P CONNECT uptime with:

- On-demand service and support from technical experts
- Remote service with VILINK®, the safe, secure, and nimble mechanism enabling external access
- 

## A New Paradigm Is EM-Erging



**3P® SMART PLATES** – Ultra-clear and updated with GS1 barcodes for traceability and LOCKSURE® lids to protect sample integrity.

**3P® CONNECT** – Automatically collect, track, and save data to mitigate risk of manual errors and optimize EM processes.

**3P® ENTERPRISE** – End-to-end EM ecosystem with digitalization and automation as cornerstones.

\*3P® CONNECT is powered by Mirrhia