

BIOMÉRIEUX

# WASPLab<sup>®</sup>

CHANGE MANAGEMENT SERVICES



PIONEERING DIAGNOSTICS

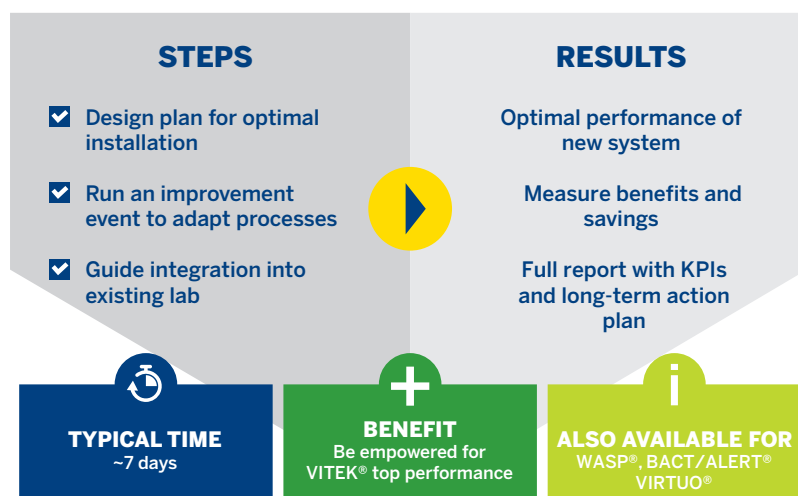
# WASPLab® CHANGE MANAGEMENT SERVICES

## UNLOCK THE POWER OF WASPLAB®

WASPLab®, the complete automated solution for specimen processing and reading, is the ultimate way to meet all your lab productivity needs. When you incorporate WASPLab® into your existing lab and ways of working, your entire team will ultimately **discover the unique benefits** that make every day in the lab run smoother.

How can you best **prepare your team** through **effective change management** so that each one makes the most of WASPLab®'s impact on their role?

With the **WASPLab® Change Management Service**, bioMérieux **supports you in your transformation** with these specialized learning modules. Lab staff will be able to share perspectives and expectations; envision how WASPLab® will impact their daily work; and learn how to best leverage all the functionalities. The time investment depends on your needs, anywhere from one week to two months.



“Change management is really very important because without the staff being involved, we could not adopt the new technology. It would not matter how good the equipment is. Our staff needs to be able, willing and happy to use it. And that is essentially what the change management service is delivering.”

- Laboratory Manager, Public Hospital

**CHALLENGE YOURSELF**



**CONSULT WITH US**



**TRANSFORM TOGETHER**



Challenge yourself to a higher performance. Consult with us on our Change Management Services...or let us help you find the customizable Lab Consultancy services best suited to your lab transformation journey.

**Because the human touch is the most important part of technology.**

For more information please contact your local bioMérieux representative or visit <http://www.biomerieux-diagnostics.com/biomerieux-lab-consultancy>