

ETEST[®] SUD

ETEST[®] Sulbactam/Durlobactam (SUD)

(0.004/4-64/4 µg/mL)

Sulbactam/Durlobactam MIC for *Acinetobacter baumannii-calcoaceticus* complex

CE IVDR



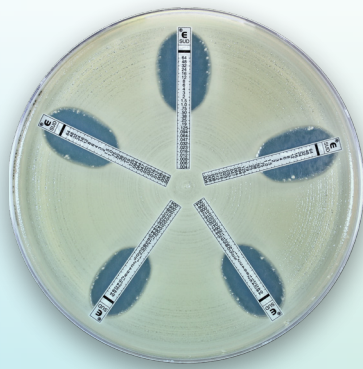
DELIVERING PROVEN
MEDICAL VALUE IN THE FACE
OF GROWING RESISTANCE

ETEST[®] is a flexible and accurate AST solution used to determine the MIC of antibiotics and antifungal agents.

ETEST[®] helps ensure optimal treatment and follow-up with antimicrobials to improve patient outcome and reduce the risk of development of drug-resistant bacteria. Making sure that patients get the right antimicrobial, in the right dose, at the right time is at the heart of antimicrobial stewardship.

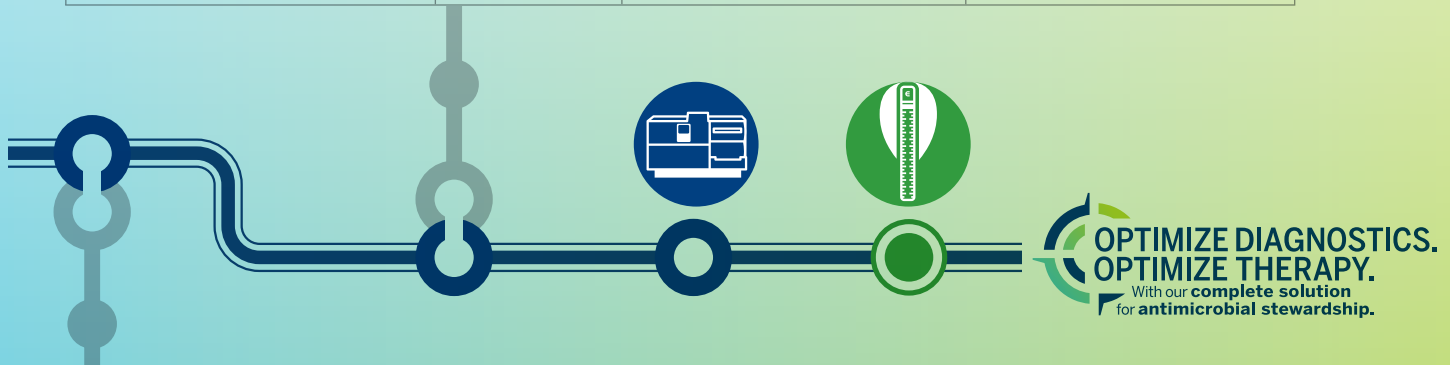
E-TEST® SUD

PERFORMANCE CHARACTERISTICS



E-TEST® performance characteristics for Sulbactam/Durlobactam have been established using comparative evaluations. These studies have shown that E-TEST® SUD MICs correlate with the CLSI M07 reference method. E-TEST® is considered to be substantially equivalent to the CLSI method when MIC values from both procedures show an Essential Agreement (EA) of $\geq 90\%$ within ± 1 dilution and a bias of $\leq \pm 30\%$.

ORGANISM	Strains	% Essential Agreement	% Bias
	(N)	(EA)	
<i>Acinetobacter baumannii-calcoaceticus</i> complex	562	97.7	+2.8



INNOVATING MICROBIOLOGY IS AT THE HEART OF VITEK® SOLUTIONS.

With our constant advances in workflow efficiency and integration, we provide you with a fast ID & AST* solution. Designed by microbiologists for microbiologists, count on VITEK® SOLUTIONS to accompany all your ID & AST needs from routine to critical patient challenges.

Drive your AMS programs with diagnostics. Take more informed therapy decisions sooner.**

*Identification & Antimicrobial Susceptibility Testing **Antimicrobial Stewardship

For more information, contact your local bioMérieux representative.

CE 0459

