



# CHROMID<sup>®</sup> MRSA / *S. aureus*

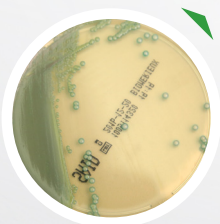
bioMérieux unveils  
an **exciting addition** to the  
**CHROMID<sup>®</sup> product portfolio!**



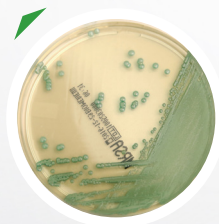
**TWO GREAT MEDIA IN ONE  
CONVENIENT EASY-TO-READ PLATE**

**CHROMID<sup>®</sup> MRSA / *S. aureus***

Ref 414524 (20 plates)



**CHROMID<sup>®</sup> *S. aureus***  
Ref 43371 (20 plates)



**CHROMID<sup>®</sup> MRSA**  
Ref 43841 (20 plates)

**CHROMID<sup>®</sup> MRSA** Ref 43841 (20 plates)

## ORIGINAL PRINCIPLE

- MRSA strains are indicated by green colored colonies resulting from alpha-glucosidase producing colonies in the presence of an antibiotic, cefoxitin

## GREATER SIMPLICITY

- Extremely easy-to-read
- Ready-to-use medium
- Specific chromogenic media for MRSA

**CHROMID<sup>®</sup> *S. aureus*** Ref 43371 (20 plates)

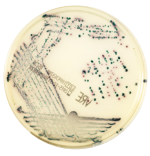
## ORIGINAL PRINCIPLE

- Direct identification of ***S. aureus*** with **green** colonies within 18-24 hours
- Validated for human specimens

## GREATER SIMPLICITY

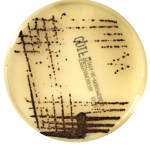
- Extremely easy-to-read
- Ready-to-use medium
- Specific chromogenic media for *Staphylococci*

# PIONEERING DIAGNOSTICS



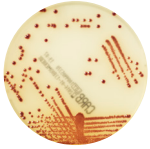
#### **CHROMID® VRE Ref 43851 (20 plates)**

- Chromogenic media for the rapid and reliable screening of Vancomycin-Resistant *Enterococci* (VRE)
- Easy-to-read – violet colonies for *E. faecium* and blue to green colonies identify *E. faecalis*



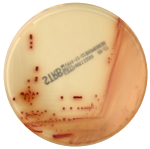
#### **CHROMID® C. difficile Ref 43871 (20 plates)**

- Chromogenic media for the screening and isolation of *Clostridium difficile*
- Easy-to-read gray to black colonies on a clear agar
- Saves time – 24-hour incubation time vs. 48-72 hours for other methods



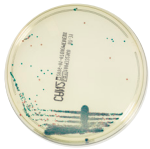
#### **CHROMID® Carba Ref 414012 (20 plates)**

- Chromogenic medium for the isolation of Carbapenemase-producing *Enterobacteriaceae*
- Easy-to-read – Specific chromogenic media just for CPE



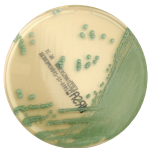
#### **CHROMID® Strepto B Ref 419751 (20 plates)**

- Chromogenic media for the rapid and reliable screening of *S. agalactiae*
- Easy-to-read – pink to red colonies mean *S. agalactiae*
- Detects both  $\beta$  hemolytic and non- $\beta$  hemolytic group B *Streptococci*



#### **CHROMID® Candida Ref 43631 (20 plates)**

- Chromogenic media for the isolation of common *Candida* species including *C. tropicalis* and *C. albicans*
- Easy-to-read chromogenic media on a clear background



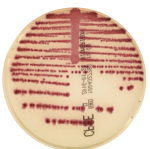
#### **CHROMID® MRSA Ref 43841 (20 plates)**

- Chromogenic media for the rapid and reliable screening of methicillin-resistant *S. aureus* (MRSA)
- Easy-to-read – green colonies mean MRSA
- Now validated for SSSI & positive blood culture



#### **CHROMID® CPS ELITE Opaque Ref 418206 (20 plates)/Ref 416173 (100 plates)**

- Chromogenic media for the screening of common urine pathogens
- Bright vibrant colors on an opaque agar
- Improved workflow – easy-to-read colored colonies on one plate reduces the need for multiple plates
- Save Time- Reduce the need to sub mixed colonies, *E. coli* and *Enterococcus* are distinguishable



#### **CHROMID® CPS ELITE Translucent Ref 418284 (20 plates)/Ref 416172 (100 plates)**

- Chromogenic media for the screening of common urine pathogens
- Easy-to-read colonies on a clear agar
- Improved workflow – easy-to-read colored colonies on one plate reduces the need for multiple plates
- Save Time- Reduce the need to sub mixed colonies, *E. coli* and *Enterococcus* are distinguishable