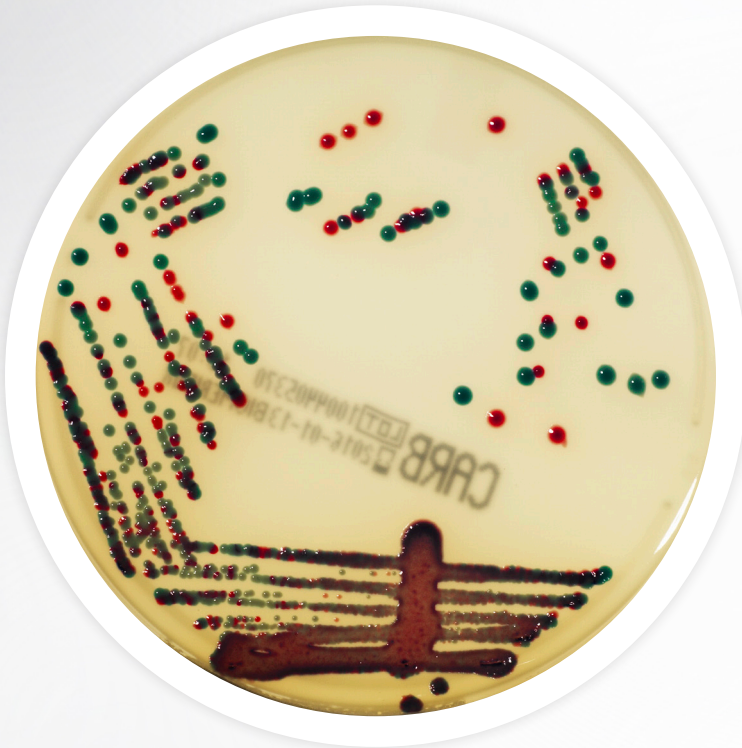




CHROMID[®] Carba

Chromogenic medium for the
isolation of **Carbapenem-**
producing **Enterobacteriaceae**



CHROMID[®] Carba agar is a selective chromogenic medium for the plating technique and isolation of Carbapenemase-producing *Enterobacteriaceae* (CPE) from laboratory samples.

ORIGINAL PRINCIPLE

- CHROMID contains three chromogenic substrates which enable the presumptive identification of the most frequently isolated CPE:
 - **Pink-to-Burgundy**: *E. coli*
 - **Blue-Green to Blue-Grey**: KESC Group (*Klebsiella*, *Enterobacter*, *Serratia*, *Citrobacter*)

GREATER SIMPLICITY

- Ready-to-use medium
- Specific chromogenic media for CPE

**PERFORMANCE ENABLED TO ANSWER
THE NEED OF FAST, ACCURATE AND RELEVANT
CPE SCREENING.***

BIOMÉRIEUX HAI SOLUTIONS

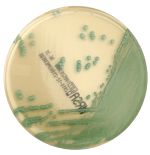
CHROMID[®] CARBA
Ref 414012 (20 plates)

CHROMID[®] MRSA
Ref 43841 (20 plates)

CHROMID[®] C. difficile
Ref 43871 (20 plates)

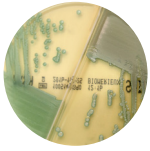
**CHROMID[®] MRSA/CHROMID[®]
S. aureus bi-plate**
Ref 414524 (20 bi-plates)

CHROMID[®] VRE
Ref 43851 (20 plates)



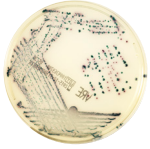
CHROMID® MRSA Ref 43841 (20 plates)

- Chromogenic media for the rapid and reliable screening of methicillin-resistant *S. aureus* (MRSA)
- Easy-to-read – green colonies mean MRSA
- Now validated for SSSI & positive blood culture



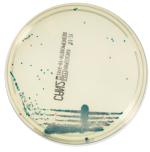
CHROMID® MRSA/CHROMID® S. aureus bi-plate Ref 414524 (20 plates)

- Chromogenic media for the rapid and reliable screening of *S. aureus* and methicillin-resistant *S. aureus* (MRSA) in one convenient bi-plate
- Now with new claims for SSSI & positive blood culture



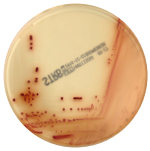
CHROMID® VRE Ref 43851 (20 plates)

- Chromogenic media for the rapid and reliable screening of Vancomycin-Resistant *Enterococci* (VRE)
- Easy-to-read – violet colonies for *E. faecium* and blue to green colonies identify *E. faecalis*



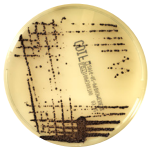
CHROMID® Candida Ref 43631 (20 plates)

- Chromogenic media for the isolation of common *Candida* species including *C. tropicalis* and *C. albicans*
- Easy-to-read chromogenic media on a clear background



CHROMID® Strepto B Ref 419751 (20 plates)

- Chromogenic media for the rapid and reliable screening of *S. agalactiae*
- Easy-to-read – pink to red colonies mean *S. agalactiae*
- Detects both β hemolytic and non- β hemolytic group B *Streptococci*



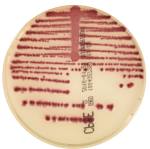
CHROMID® C. difficile Ref 43871 (20 plates)

- Chromogenic media for the screening and isolation of *Clostridium difficile*
- Easy-to-read gray to black colonies on a clear agar
- Saves time – 24-hour incubation time vs. 48-72 hours for other methods



CHROMID® CPS ELITE Opaque Ref 418206 (20 plates)/Ref 416173 (100 plates)

- Chromogenic media for the screening of common urine pathogens
- Bright vibrant colors on an opaque agar
- Improved workflow – easy-to-read colored colonies on one plate reduces the need for multiple plates
- Save Time- Reduce the need to sub mixed colonies, *E. coli* and *Enterococcus* are distinguishable



CHROMID® CPS ELITE Translucent Ref 418284 (20 plates)/Ref 416172 (100 plates)

- Chromogenic media for the screening of common urine pathogens
- Easy-to-read colonies on a clear agar
- Improved workflow – easy-to-read colored colonies on one plate reduces the need for multiple plates
- Save Time- Reduce the need to sub mixed colonies, *E. coli* and *Enterococcus* are distinguishable