



BIOMÉRIEUX



CHROMID[®] *C. difficile* AGAR

The **First** and **Only**
Chromogenic Media for the
Rapid Isolation and **Identification**
of *Clostridium difficile*

ORIGINAL PRINCIPLE

- Isolation and identification of *C. difficile* in 24 hours
- *C. difficile* colonies are **black, dark gray, or gray**

GREATER SIMPLICITY

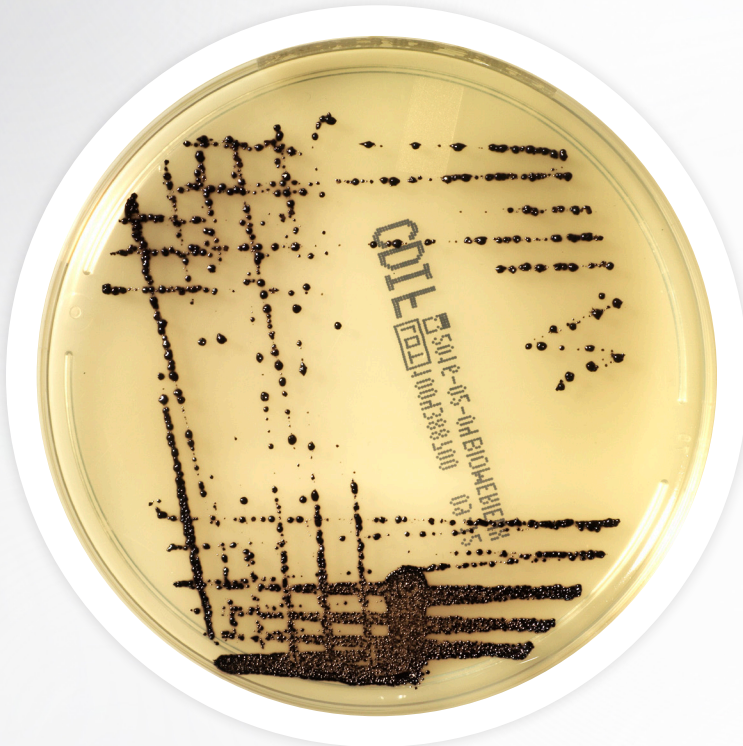
- Incubation in anaerobic conditions.
- Specific chromogenic medium for the screening of *C. difficile*

CULTURE IS STILL THE MOST SENSITIVE DIAGNOSTIC METHOD AND IS ESSENTIAL FOR INVESTIGATING PATIENTS WITH:

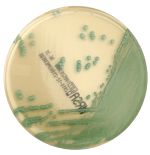
- Severe, complicated diseases
- Evocative clinical symptoms but with negative toxin results

CULTURE IS THE ONLY METHOD TO ENABLE:

- Epidemiological studies in case of outbreaks
- Antibiotic susceptibility testing

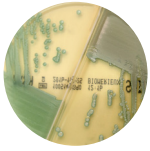


PIONEERING DIAGNOSTICS



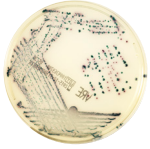
CHROMID® MRSA Ref 43841 (20 plates)

- Chromogenic media for the rapid and reliable screening of methicillin-resistant *S. aureus* (MRSA)
- Easy-to-read — green colonies mean MRSA
- Now validated for SSSI & positive blood culture



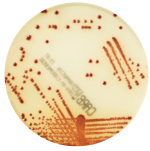
CHROMID® MRSA/CHROMID® S. aureus bi-plate Ref 414524 (20 plates)

- Chromogenic media for the rapid and reliable screening of *S. aureus* and methicillin-resistant *S. aureus* (MRSA) in one convenient bi-plate
- Now with new claims for SSSI & positive blood culture



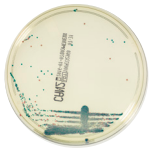
CHROMID® VRE Ref 43851 (20 plates)

- Chromogenic media for the rapid and reliable screening of Vancomycin-Resistant *Enterococci* (VRE)
- Easy-to-read — violet colonies for *E. faecium* and blue to green colonies identify *E. faecalis*



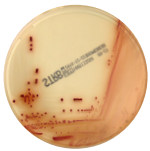
CHROMID® Carba Ref 414012 (20 plates)

- Chromogenic medium for the isolation of Carbapenemase-producing *Enterobacteriaceae*
- Easy-to-read — Specific chromogenic media just for CPE



CHROMID® Candida Ref 43631 (20 plates)

- Chromogenic media for the isolation of common *Candida* species including *C. tropicalis* and *C. albicans*
- Easy-to-read chromogenic media on a clear background



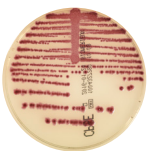
CHROMID® Strepto B Ref 419751 (20 plates)

- Chromogenic media for the rapid and reliable screening of *S. agalactiae*
- Easy-to-read — pink to red colonies mean *S. agalactiae*
- Detects both β hemolytic and non- β hemolytic group B *Streptococci*



CHROMID® CPS ELITE Opaque Ref 418206 (20 plates)/Ref 416173 (100 plates)

- Chromogenic media for the screening of common urine pathogens
- Bright vibrant colors on an opaque agar
- Improved workflow — easy-to-read colored colonies on one plate reduces the need for multiple plates
- Save Time- Reduce the need to sub mixed colonies, *E. coli* and *Enterococcus* are distinguishable



CHROMID® CPS ELITE Translucent Ref 418284 (20 plates)/Ref 416172 (100 plates)

- Chromogenic media for the screening of common urine pathogens
- Easy-to-read colonies on a clear agar
- Improved workflow — easy-to-read colored colonies on one plate reduces the need for multiple plates
- Save Time- Reduce the need to sub mixed colonies, *E. coli* and *Enterococcus* are distinguishable