



BIOFIRE® SPOTFIRE® RESPIRATORY/SORE THROAT (R/ST) PANEL

1 PCR Test. Up to 15 Targets. ~15 Minutes.

Based on patient symptoms and the type of sample collected, users can select either the Respiratory or Sore Throat menu.

RESPIRATORY

VIRUSES

- Adenovirus
- Coronavirus SARS-CoV-2
- Coronavirus (seasonal)
- Human metapneumovirus
- Human rhinovirus/enterovirus
- Influenza A virus
 - Influenza A virus A/H1-2009
 - Influenza A virus A/H3
- Influenza B virus
- Parainfluenza virus
- Respiratory syncytial virus

BACTERIA

- Bordetella parapertussis*
- Bordetella pertussis*
- Chlamydia pneumoniae*
- Mycoplasma pneumoniae*

SORE THROAT

VIRUSES

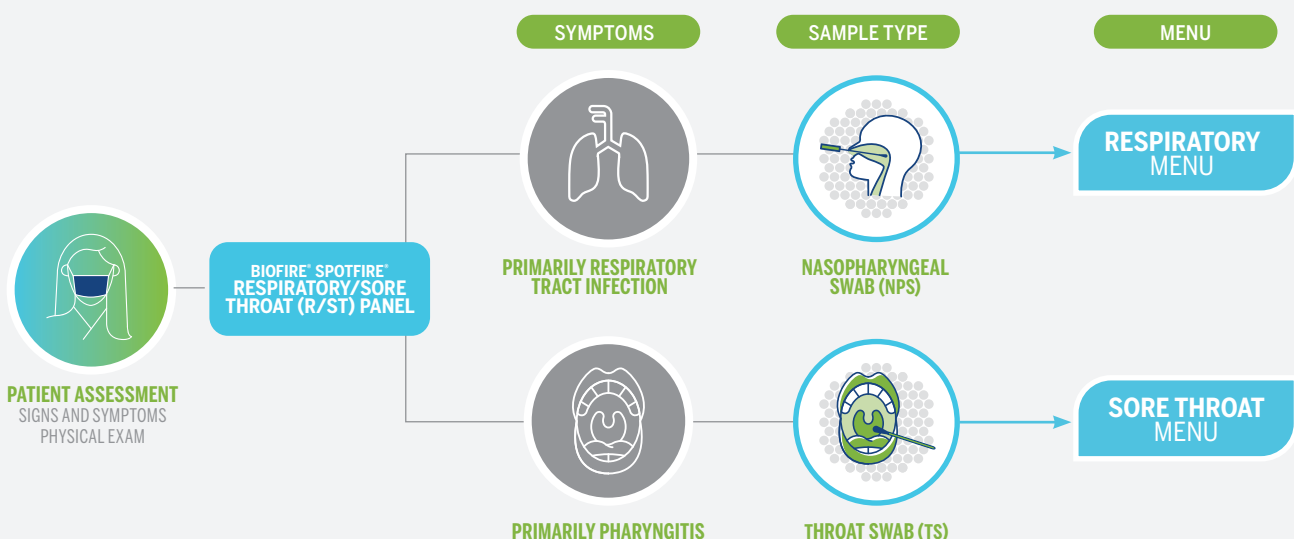
- Adenovirus
- Coronavirus (seasonal)
- Human metapneumovirus
- Human rhinovirus/enterovirus
- Influenza A virus
 - Influenza A virus A/H1-2009
 - Influenza A virus A/H3
- Influenza B virus
- Parainfluenza virus
- Respiratory syncytial virus

BACTERIA

- Chlamydia pneumoniae*
- Mycoplasma pneumoniae*
- Streptococcus dysgalactiae*
(group C/G Strep)
- Streptococcus pyogenes*
(group A Strep)

Overall Respiratory performance (NPS specimens): 98.5% PPA, 99.1% NPA¹
Overall Sore Throat performance (TS specimens): 95.9% PPA, 99.0% NPA¹

FDA CLEARED | CLIA WAIVED

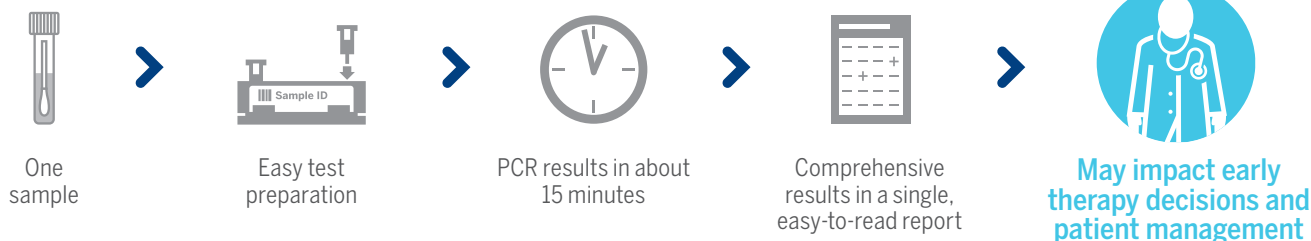


What is syndromic testing?

Syndromic testing refers to a symptom-driven broad grouping of probable pathogens into one rapid test that maximizes the chance of getting the right answer in a clinically relevant timeframe.

Knowing the pathogen matters.

Rapid & accurate pathogen identification at the point of care may positively impact patient management & therapy decisions.

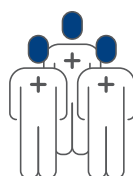


The value of the syndromic approach for Point-of-Care Testing (POCT).



Inform Clinical Decisions

Testing for more than flu, RSV, and SARS-CoV-2 with one test provides healthcare professionals with the full picture. Comprehensive results in a clinically actionable timeframe may inform a definitive diagnosis, optimize care, and support antimicrobial stewardship.



Improve Patient Satisfaction

Administering one swab, on one test that detects multiple pathogens may result in reduced follow-up appointments, swabbing, and testing, which could improve patient comfort, experience, and convenience.



Optimize Operations

The simplified workflow and quick turnaround time of the BIOFIRE® SPOTFIRE® System may enable rapid and comprehensive answers, which can be communicated to the patient during the appointment while reducing the need for callbacks or expensive and slow send-out testing.

Panel Information

Sample Type: Nasopharyngeal swab (NPS) in 3 mL of transport media or throat swab (TS) in 1 mL of transport media

Storage Conditions: All kit components stored at room temperature (15-25 °C)

Specimen Transport and Storage: Room temperature for up to 4 hours (15-25 °C), refrigerated for up to 3 days (2-8 °C), or frozen (≤ -15 °C) for up to 30 days

Part number

BIOFIRE® SPOTFIRE® Respiratory/Sore Throat Panel kit (30 pouches): 423485

Contact Us

bioMérieux S.A.
69280 Marcy l'Etoile
France
Tel: +33 (0) 4 78 87 20 00
Fax: +33 (0) 4 78 87 20 90
biomerieux.com

Manufactured by:
BioFire Diagnostics, LLC
515 Colorow Drive
Salt Lake City, UT 84108 USA
Tel: +1-801-736-6354
biofiredx.com

References

¹ Overall performance based on prospective clinical study for the BIOFIRE SPOTFIRE Respiratory/Sore Throat (R/ST) Panel, data on file, BioFire Diagnostics

Product availability varies by country. Consult your bioMérieux representative.