

BIOMÉRIEUX

BIOMÉRIEUX LAB CONSULTANCY  
MICROBIOLOGY  
WASPLAB<sup>®</sup> DIAGNOSIS



PIONEERING DIAGNOSTICS



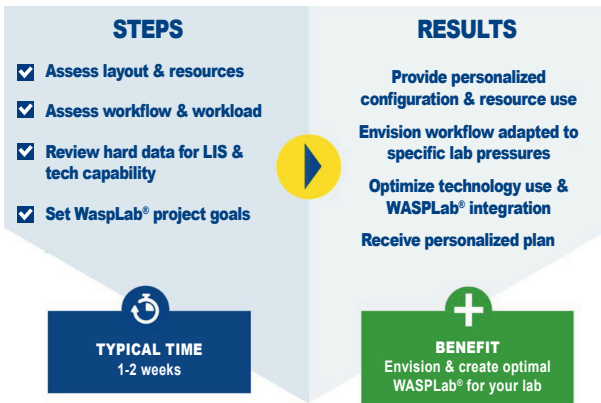
# ENVISION YOUR UNIQUE WASPLAB®

WASPLab®, the complete automated solution for specimen processing and reading, will transform your lab – but **your WASPLab® needs are unique**. How do you best optimize your WASPLab® integration to ensure performance excellence every day?

**A Microbiology WASPLab® Diagnosis** by bioMérieux Lab Consultancy partners with you to:

- Determine together your immediate, mid- and long-term goals
- Analyze your current situation: workflow, workload and layout
- Review your technological capacity needs

In one to two weeks, a **personalized plan** will clearly outline the time and cost savings an **optimal WASPLab® for your lab** could bring you, as well as critical information for your go/no-go decision-making.



*“ bioMérieux contrasted what we were doing with how it could be – including numbers, statistics and real metrics on what we could accomplish. This forward-looking approach provided the impetus to actually make change. ”*

Laboratory Operations Director,  
Private Hospital

## Your potential gains:

**~40%**  
TAT ↘

**~52%**  
Productivity ↗

**~75%**  
Automation level ↗

CHALLENGE YOURSELF



CONSULT WITH US



TRANSFORM TOGETHER



Challenge yourself to envision your unique, optimal WASPLab®. Consult with us for a Microbiology WASPLab® Diagnosis... or let us help you find the customizable bioMérieux Lab Consultancy services best suited to your lab transformation journey. **Because the human touch is the most important part of technology.**

For more information about bioMérieux Lab Consultancy, please contact your local bioMérieux representative or visit <http://www.biomerieux-diagnostics.com/biomerieux-lab-consultancy>