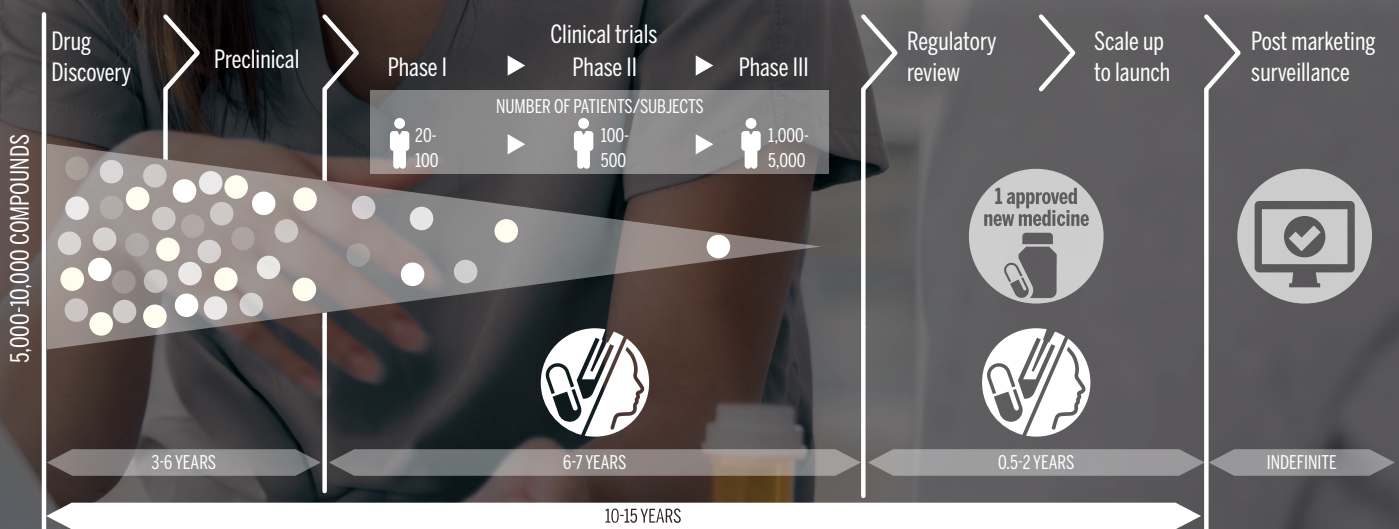


COMPANION DIAGNOSTICS

partnering with your clinical drug development for better patient outcomes





OUR EXPERTISE TO SUPPORT YOU



Personalized Medicine partnerships rely on technologies in which bioMérieux has a long history of established expertise



MICROBIOLOGY



IMMUNOASSAYS



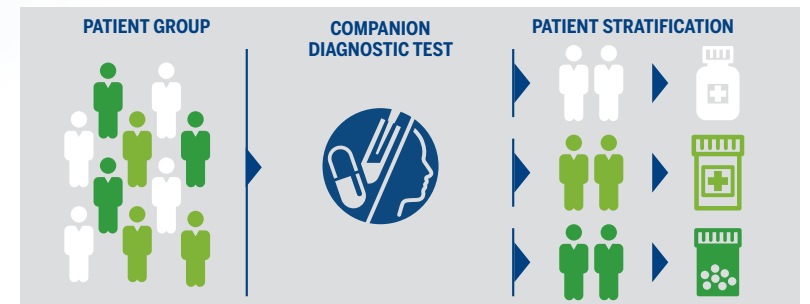
MOLECULAR BIOLOGY

These partnerships may be in the field of **Infectious Diseases, Immune Disorders or Acute Care (Sepsis, Acute Kidney Injury (AKI)...) and may involve anti-infective medicine, immunomodulating interventions, vaccines and medical devices...**

COMPANION TESTS

These **mandatory** diagnostic tests are used to select patients likely to show a clear benefit from an intervention (therapy, vaccine or device) for a given disease (patient stratification) and to identify patients with predispositions to serious side effects.

► **bioMérieux has acquired significant experience** in this field, working with major pharmaceutical companies such as GSK, Novartis, Pfizer to develop THXID®-BRAF (a molecular-based Companion Diagnostic test to identify melanoma patients with BRAF V 600E/K mutations) as well as with other pharmaceutical partners to develop immunoassay-based CDx candidates.



SUPPORTIVE/COMPLEMENTARY TESTS

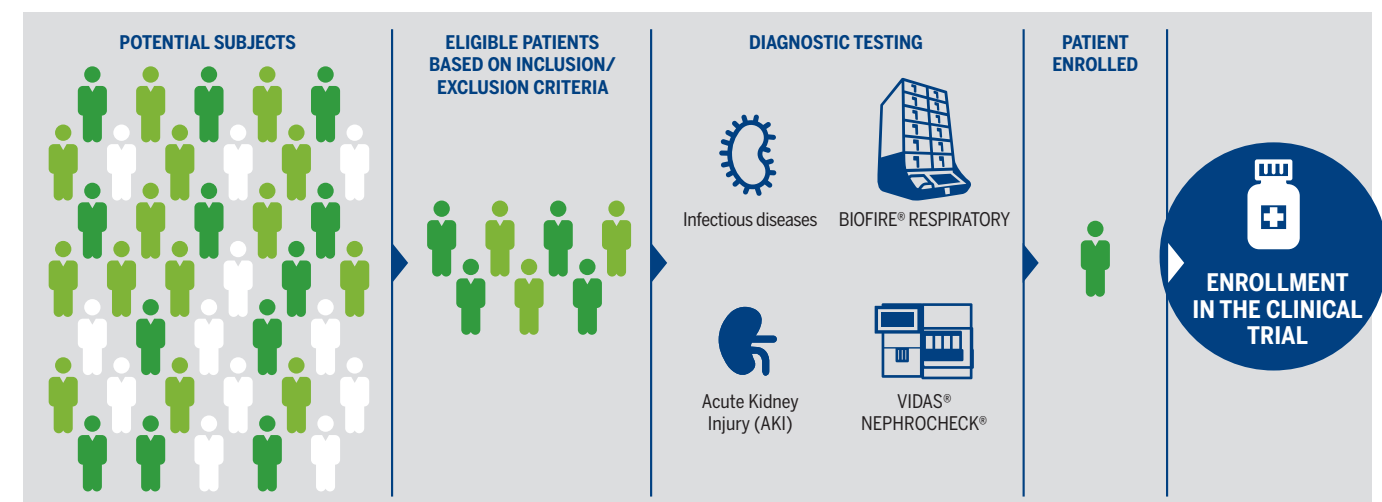
These diagnostic tests are **recommended** for safe drug or vaccine prescription or medical device use, and for good medical practice.

► **Tests used to optimize clinical trials through patient stratification and cohort enrichment.**

Many of the tests on the BIOFIRE® (e.g. Respiratory panels) and VIDAS® systems (NEPHROCHECK® in the field of AKI), as well as certain microbiology growth-based assays, can be used to efficiently select patients for treatment with prophylactic or therapeutic monoclonal antibodies, anti-infective medications or immuno-modulatory drugs as well as drugs involved in AKI.

► **Tests recommended for safe drug or vaccine utilization or effective medical device use, and for good medical practice. In particular, tests used to determine antibiotic susceptibility (e.g. Minimum Inhibitory Concentration (MIC)) and to accompany their safe prescription.**

For many years, bioMérieux has applied its partnership know-how in the field of infectious diseases to coordinate the development of the ETEST® and VITEK® 2 product ranges, in close collaboration with anti-infective pharmaceutical companies. Both these diagnostic solutions play an instrumental role in supporting the adoption and safe prescription of new anti-infective medications and avoiding their misuse, particularly in the context of growing antimicrobial resistance.



PHARMACEUTICAL COMPANIES CHALLENGES AND EXPECTATIONS

VALUE OF DIAGNOSTICS

CLINICAL TRIALS

Clinical trials are long, costly, and could fail. Maximize the probability of trial success while optimizing time and cost.

Optimize clinical trials by selecting the appropriate patient population leading to an increased probability of trial success, as well as time-savings and cost-effectiveness by limiting unnecessary patient drug exposure.

COMMERCIALIZATION

Personalized Medicine is crucial for innovative drugs : "The right treatment for the right patient at the right moment and with the right dose."

Ensure the most appropriate choice of drug in a given context to improve the chances of positive patient outcome while avoiding/limiting undesirable side effects, leading to safe drug adoption and prescription.



KEY BENEFITS

FOR PATIENTS

- ▶ Stratification leading to the prescription of the **right therapy for the right patient.**
- ▶ **Quicker selection of the optimal therapy.**
- ▶ **Improved patient outcomes** and reduced side effects.
- ▶ **Deeper understanding** of the disease and medical decision.

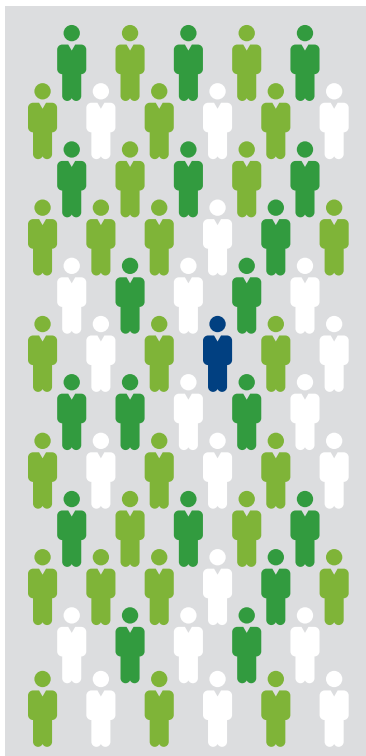
FOR PHARMACEUTICAL COMPANIES

- ▶ **Increased probability of clinical trial success** as the drug is prescribed to a subpopulation likely to positively respond to the treatment.
- ▶ **Safer drug prescription**, helping to protect drug efficacy and prevent drug misuse.
- ▶ **Opportunity to obtain a premium reimbursement** as a higher medical value is delivered to patients.

FOR IVD COMPANIES

- ▶ **Increased recognition** of the high medical value of In Vitro Diagnostic (IVD) solutions.
- ▶ **Co-development strategy** for early and timely diagnostic availability.
- ▶ **Co-adoption strategy** for enhanced market access: joint medical education and promotion, synergies for reimbursement...
- ▶ Contribution to the **overall control of healthcare spending** as diagnostics support Personalized Medicine.

OUR PARTNERSHIP PROGRAM



At bioMérieux, we combine our expertise in infectious diseases and targeted critical conditions with our experience in the field of “Companion” and “Supportive/Complementary” Diagnostic tests to forge strong, tailored and innovative development and commercialization partnerships with healthcare companies.



Our Companion Diagnostics (CDx) Program provides a single point of entry to facilitate interactions with our partners. The CDx team’s objective is to promote high medical value laboratory tests for use in combination with targeted treatments and medical interventions.

“ bioMérieux is committed to making Personalized Medicine a reality by building strong, innovative and tailored partnerships with pharmaceutical, vaccine and medical device companies. ”

Valérie Raymond-Schwartzmann
Companion Diagnostics Program Director

CONTACT

companion.diagnostics@biomerieux.com
<https://www.biomerieux.com/corp/en/partners/business-development-partner.html>