



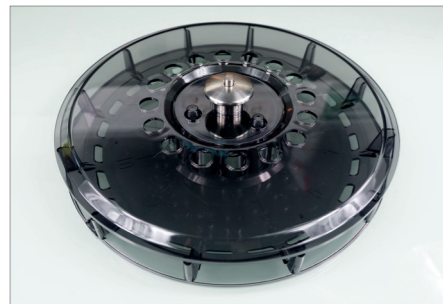
## Reagents: High quality & Expertise



| FUNCTION                    | PRODUCT NAME     | REFERENCE | REFERENCE* |
|-----------------------------|------------------|-----------|------------|
| Primary Stain               | Crystal Violet   | 29524     | 29587      |
| Mordant                     | Iodine           | 29523     | 29586      |
| Decolorizer & Counter Stain | Acetone Safranin | 29519     | 29582      |
|                             | Safranin         | 29520     | 29583      |
|                             | Acetone Fuchsin  | 29521     | 29584      |
|                             | Fuchsin          | 29522     | 29585      |

\* Dedicated to USA, Canada & Latin America countries.

## Instrument specifications



| PREVI® COLOR GRAM - Ref.414292 |  |            |
|--------------------------------|--|------------|
| Slide carousel capacity        | 12 (PREVI®COLOR GRAM 12)   | Ref.415591 |
|                                | 30 (PREVI®COLOR GRAM 30)   | Ref.415592 |
| Dimensions                     | H 25.5 cm x W 58.5 cm x D 56 cm  |            |
| Clearance Height (Lid open)    | 58 cm  |            |
| Weight                         | 15.5 kg  |            |
| High throughput                | <ul style="list-style-type: none"> <li>• 12-120 slides/hour (PREVI® COLOR GRAM 12)</li> <li>• 30-300 slides/hour (PREVI® COLOR GRAM 30)</li> </ul> |            |



| PREVI® COLOR CYTOCENTRIFUGE ROTOR (optional application) - Ref.29506 |  |
|--|--|
| Capacity   | 8 chambers and slides  |
| Weight   | 1.1 kg   |
| Dimensions   | Diameter 22.6 cm x H 6.2 cm  |
| Speed  | Programmable 100 to 2000 rpm   |
| Body Fluids  | <ul style="list-style-type: none"> <li>• Bronchoalveolar liquid (BAL)</li> <li>• Cerebrospinal fluid (CSF)</li> <li>• Urine</li> <li>• Synovial fluid</li> </ul> |

## WE ARE FOR ADVANCING ANTIMICROBIAL STEWARDSHIP

Future generations need us to sustain antibiotic efficacy and curb resistance. As a healthcare professional, you know that appropriate use of antibiotics is key. Put diagnostics at the heart of antimicrobial stewardship to drive informed therapy decisions. From antibiotic initiation, to optimization, to discontinuation, trust bioMérieux diagnostic solutions. **Like you, we are for advancing antimicrobial stewardship.**



# PREVI® COLOR GRAM

FOR AUTOMATED GRAM STAINING

## Spreading confidence





# PREVI® COLOR GRAM

## FULLY AUTOMATED STAIN PROCESS FROM FIXATION TO DRYING

### Small & self-running

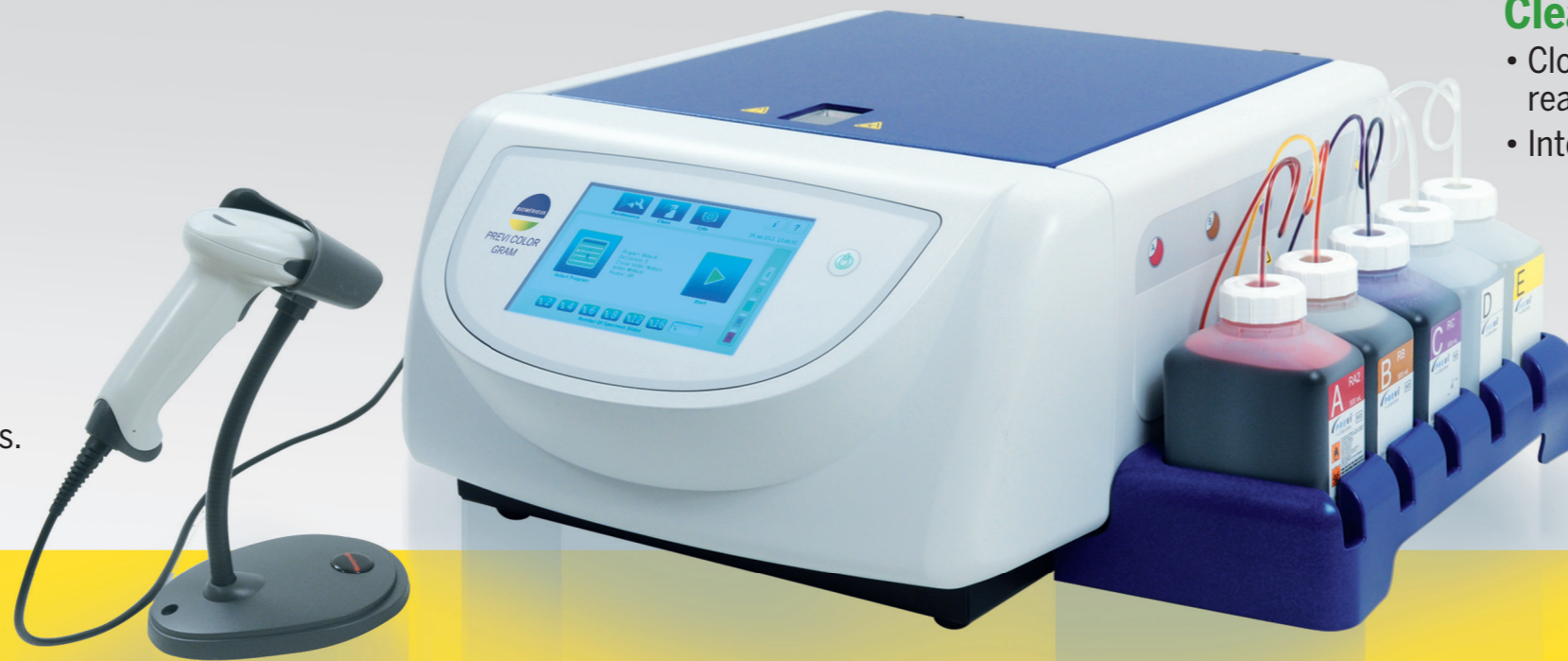
- Automated cleaning of the nozzles & the instrument for easier maintenance.
- Load and Go.
- Level monitoring.

### Do it your Way!

- Up to 12 storable programs.
- Choice of 4 different counter stain reagents.
- Batch staining or partial loads.

### Clean & Safe

- Closed system and ready-to-use closed reagents.
- Integrated reagent waste container.



### Spray the Word!

- Spray nozzle system to decrease reagent consumption & waste.
- Standardized slides ready in 5 minutes.
- Avoid cross contamination.

## Full Traceability of your staining process

- PREVI® COLOR GRAM includes a barcode reader insuring traceability of slides and reagents.
- All operation performed on the system are stored in a log file and can be exported.



## Intuitive Graphical Touch screen

- User friendly approach for an easy handling of the system.
- Visual alerts in case of low reagent level or full waste container.
- Visual maintenance reminders can be set up by the user.



## Gram stainer and Cytocentrifuge as "2 in 1" system

- Change your carousel and use the instrument to effectively concentrate samples for Gram stains.
- Avoid the investment in a stand-alone Cytocentrifuge by adding a cytocentrifuge rotor to the PREVI® COLOR GRAM.
- The cytocentrifuge rotor benefits from the ease of use and the flexibility in consumables and programs of the PREVI® COLOR GRAM.



Cytocentrifuge rotor